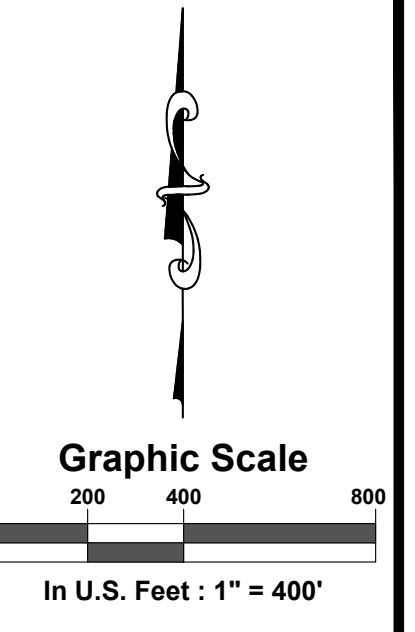
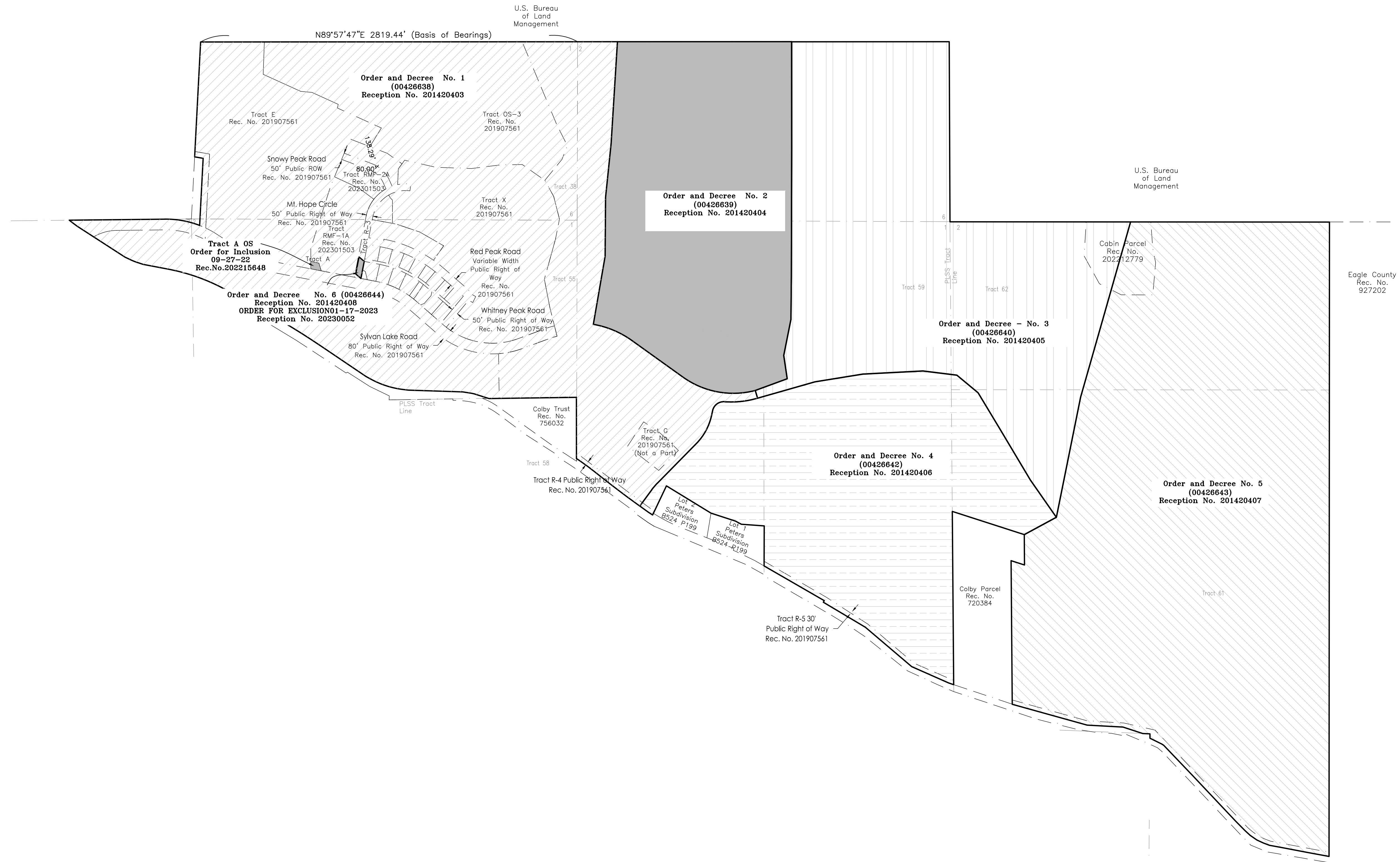


Metropolitan Districts 1 thru 6 of Haymeadow Subdivision

Haymeadow Filing 1, as Amended
the Town of Eagle, Colorado
Situated in Tracts 37, 38, 44, 55, 59, 61, 62, and 63
Township 5 South, Range 84 West of the Sixth P.M.,
Eagle County, Colorado



SGM
118 West Sixth Street, Suite 200
Glenwood Springs, CO 81601
970.945.1004 www.sgm-inc.com



Metropolitan Districts Boundary Exhibit Eagle County, Colorado

#	Date	By	Revision
1			
2			
3			
4			
5			
6			
7			
8			
9			

Job No. 2016-277.003
 Drawn by: sah
 Date: 10/09/2024
 Approved: PLS: SAH
 File#2024Haymeadow District boundaries

Location:
**Haymeadow Parcels
 Eagle, Colorado**

i:\2016\2016-277-Haymeadows\003-Survey\H-Dwg\BareMaps\2024Haymeadow District boundaries.dwg Plotted: 12/2/2024 7:04 AM By: Scott Hemmen